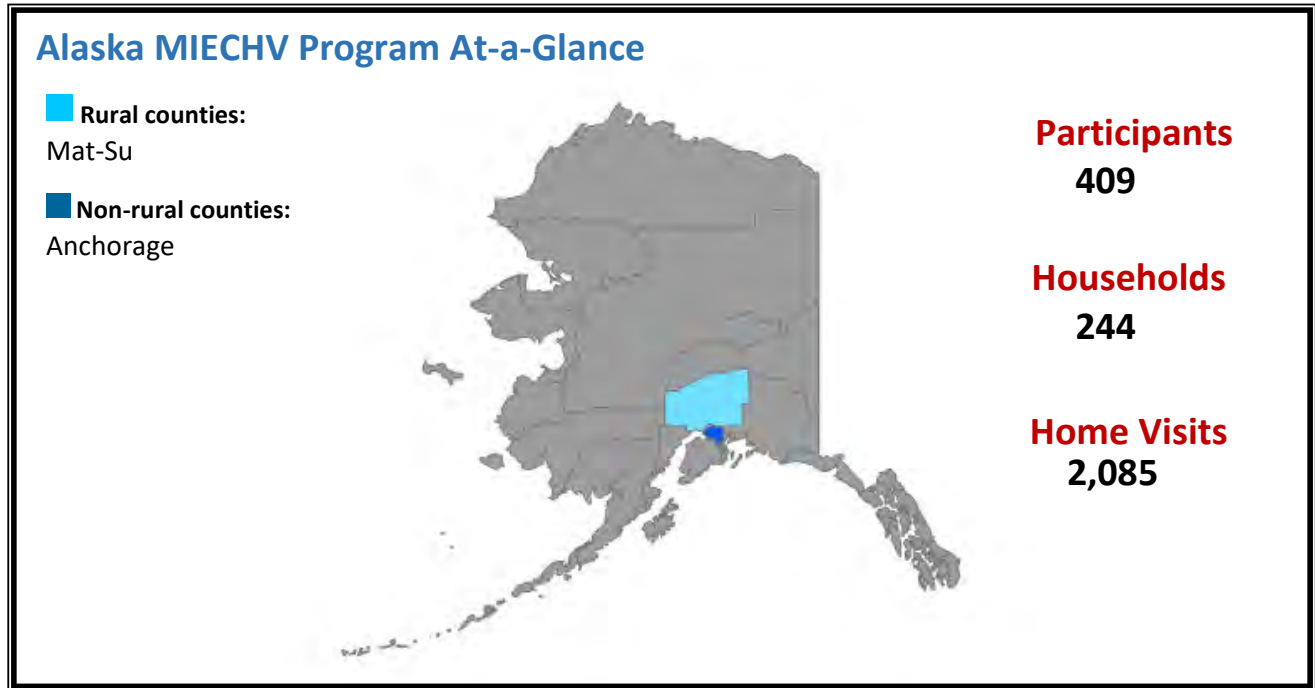


HRSA's Maternal, Infant, and Early Childhood Home Visiting (MIECHV) Program

- Supports the [Alaska Home Visiting Program](#) and provides voluntary, evidence-based home visiting programs for at-risk pregnant women and families with children through kindergarten entry
- Builds upon decades of scientific research showing that home visits by a nurse, social worker, early childhood educator, or other trained professional during pregnancy and in the first years of a child's life helps prevent child abuse and neglect, supports positive parenting, improves maternal and child health, and promotes child development and school readiness



Alaska Serves a High-Risk Population

MIECHV Program awardees serve high-risk populations. Awardees tailor their programs to serve populations of need within their state.

- 100% of households were low income
- 16.8% of households included pregnant teens
- 11.7% of households included someone who used tobacco products in the home

Evidence-Based Home Visiting Models in Alaska

[Nurse-Family Partnership \(NFP\)](#)

Alaska Performance Highlights

- **Well Child Visits:** 95.0% of children enrolled in home visiting received their last recommended well child visit based on the American Academy of Pediatrics schedule
- **Behavioral Concern Inquiries:** Caregivers were asked if they had any concerns regarding their child's development, behavior, or learning in 95.8% of postpartum home visits
- **Collaboration with University Social Work Program:** Piloted a new collaboration with the University of Alaska Anchorage School of Social Work, which placed a social work student in a year-long practicum within the hospital-based LIA. An evaluation on the benefits to the program from the addition of a social worker to the team will be conducted at the end of the placement