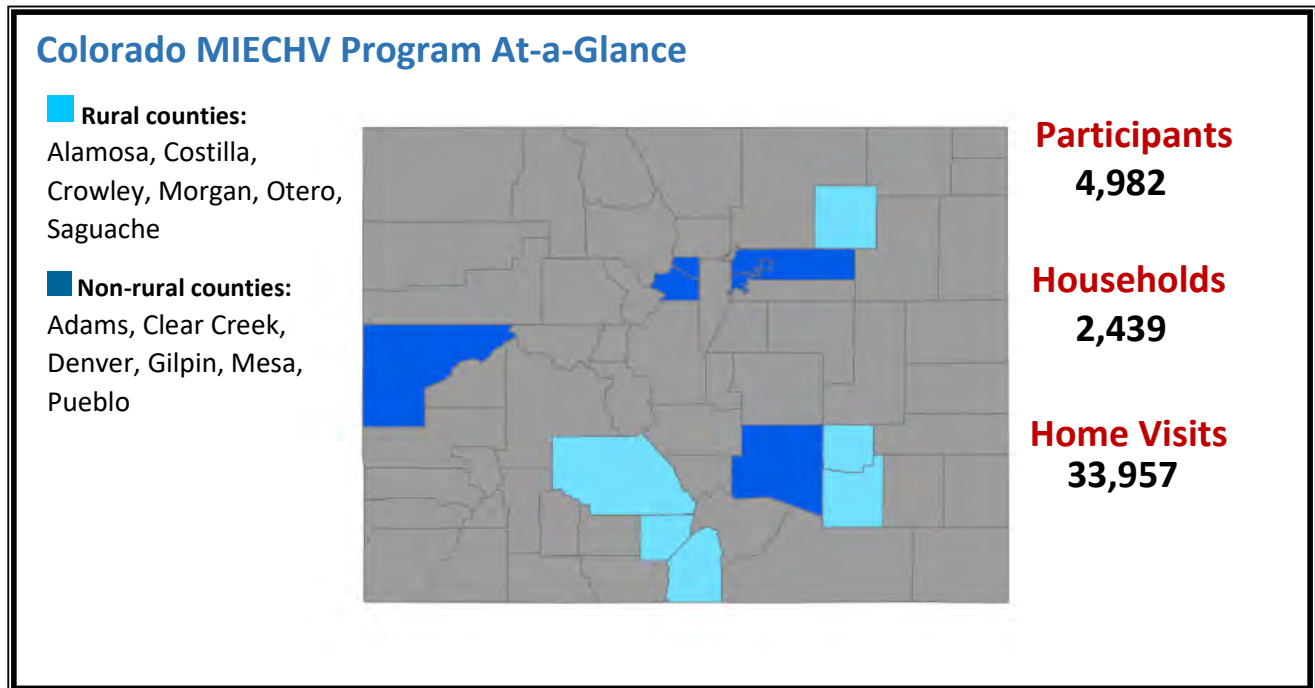


HRSA's Maternal, Infant, and Early Childhood Home Visiting (MIECHV) Program

- Supports the [Colorado Home Visiting Program](#) and provides voluntary, evidence-based home visiting programs for at-risk pregnant women and families with children through kindergarten entry
- Builds upon decades of scientific research showing that home visits by a nurse, social worker, early childhood educator, or other trained professional during pregnancy and in the first years of a child's life helps prevent child abuse and neglect, supports positive parenting, improves maternal and child health, and promotes child development and school readiness



Colorado Serves a High-Risk Population

MIECHV Program awardees serve high-risk populations. Awardees tailor their programs to serve populations of need within their state.

- 76.2% of households were low income
- 12.6% of households included someone who used tobacco products in the home
- 9.8% of households included someone with low student achievement

Colorado Performance Highlights

- **Postpartum Care:** 91.3% of mothers enrolled in home visiting received a postpartum visit with a healthcare provider within 8 weeks of delivery
- **Behavioral Concern Inquiries:** Caregivers were asked if they had any concerns regarding their child's development, behavior, or learning in 96.5% of postpartum home visits

Evidence-Based Home Visiting Models in Colorado

[Home Instruction for Parents of Preschool Youngsters \(HIPPY\)](#)

[Nurse-Family Partnership \(NFP\)](#)

[Parents as Teachers \(PAT\)](#)