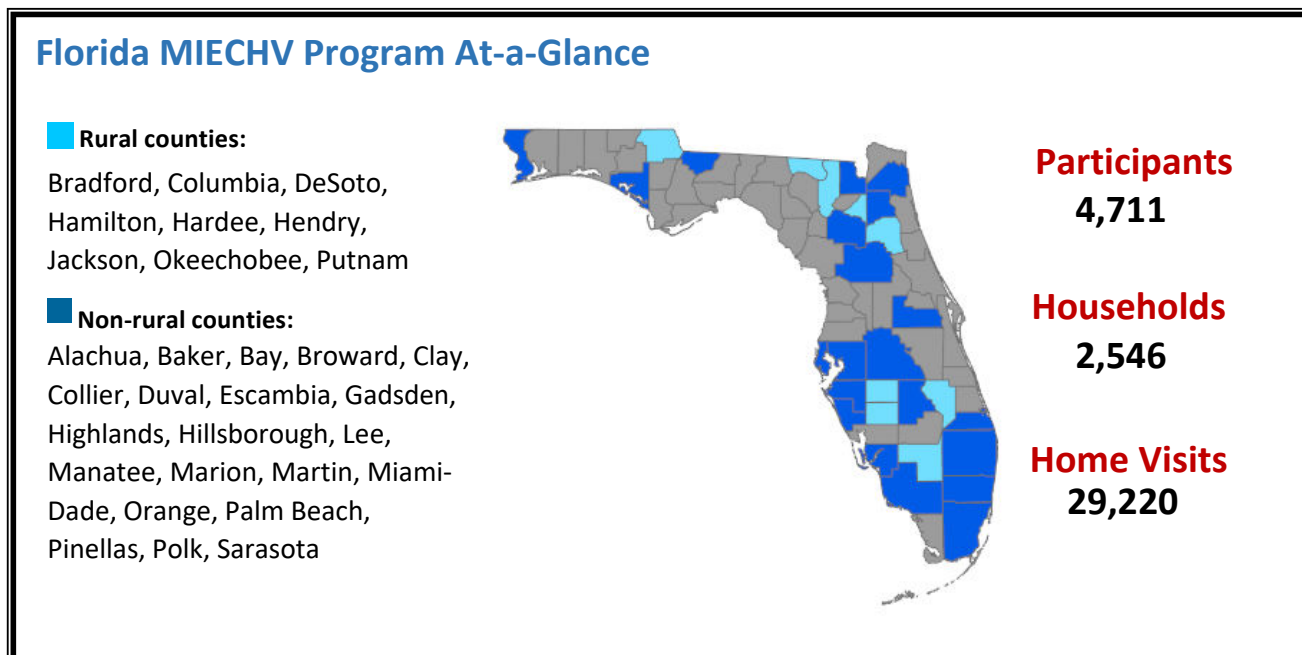


HRSA's Maternal, Infant, and Early Childhood Home Visiting (MIECHV) Program

- Supports the [Florida Home Visiting Program](#) and provides voluntary, evidence-based home visiting programs for at-risk pregnant women and families with children through kindergarten entry
- Builds upon decades of scientific research showing that home visits by a nurse, social worker, early childhood educator, or other trained professional during pregnancy and in the first years of a child's life helps prevent child abuse and neglect, supports positive parenting, improves maternal and child health, and promotes child development and school readiness



Florida Serves a High-Risk Population

MIECHV Program awardees serve high-risk populations. Awardees tailor their programs to serve populations of need within their state.

- 75.1% of households were low income
- 31.6% of households included someone with low student achievement
- 22.2% of households reported a history of child abuse or maltreatment

Florida Performance Highlights

- **Behavioral Concern Inquiries:** Caregivers were asked if they had any concerns regarding their child's development, behavior, or learning in 99.3% of postpartum home visits
- **Intimate Partner Violence (IPV) Screening:** 91.6% of caregivers enrolled in home visiting were screened for IPV within 6 months of enrollment
- **Developmental Screening and Referral:** Implemented a Continuous Quality Improvement Learning Collaborative on supporting child development that increased screening and referral rates and strengthened local collaborations with Part C agency

Evidence-Based Home Visiting Models in Florida

[Healthy Families America \(HFA\)](#)

[Nurse-Family Partnership \(NFP\)](#)

[Parents as Teachers \(PAT\)](#)