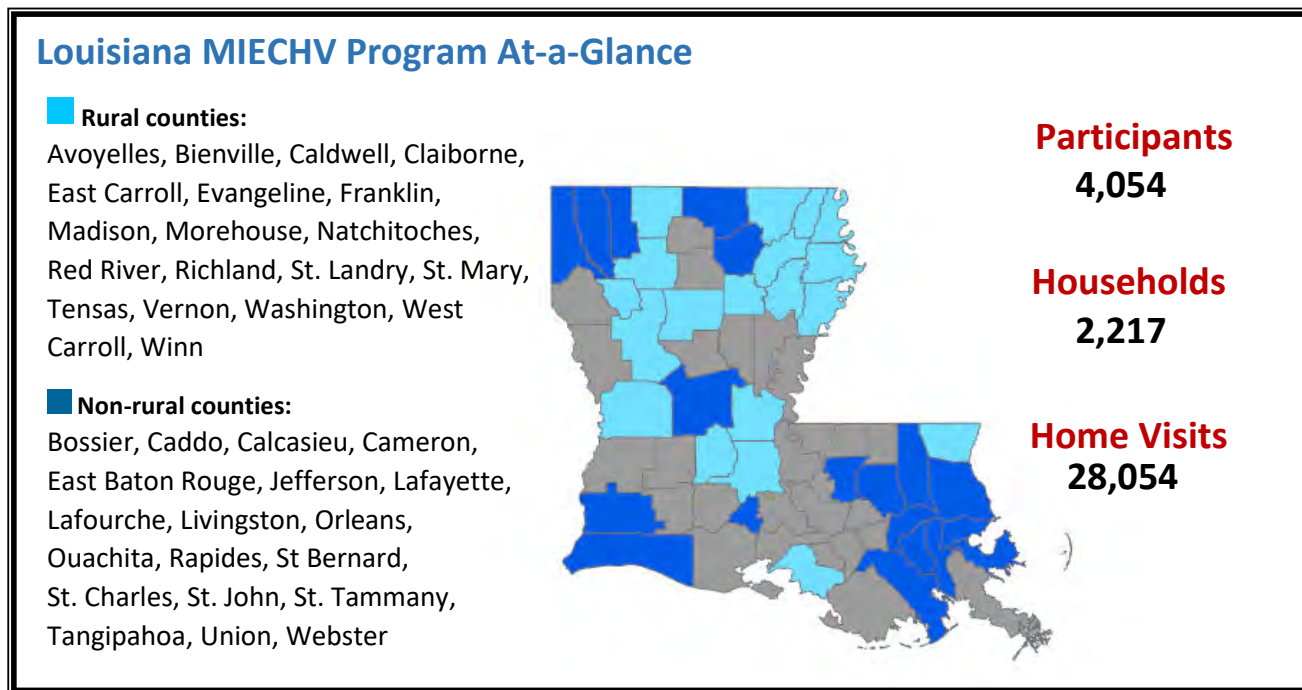


HRSA's Maternal, Infant, and Early Childhood Home Visiting (MIECHV) Program

- Supports the [Louisiana Home Visiting Program](#) and provides voluntary, evidence-based home visiting programs for at-risk pregnant women and families with children through kindergarten entry
- Builds upon decades of scientific research showing that home visits by a nurse, social worker, early childhood educator, or other trained professional during pregnancy and in the first years of a child's life helps prevent child abuse and neglect, supports positive parenting, improves maternal and child health, and promotes child development and school readiness



Louisiana Serves a High-Risk Population

MIECHV Program awardees serve high-risk populations. Awardees tailor their programs to serve populations of need within their state.

- 84.4% of households were low income
- 27.2% of households included pregnant teens
- 9.9% of households included someone with low student achievement

Evidence-Based Home Visiting Models in Louisiana

[Nurse-Family Partnership \(NFP\)](#)

[Parents as Teachers \(PAT\)](#)

Louisiana Performance Highlights

- **Continuity of Insurance Coverage:** 98.5% of caregivers enrolled in home visiting had continuous health insurance coverage for at least 6 consecutive months
- **Child Maltreatment:** Only 2.4% of children enrolled in home visiting had an investigated case of child maltreatment
- **Learn the Signs. Act Early (LTSAE) Project:** Louisiana's LTSAE Ambassador worked with home visitors to develop training and processes to promote developmental monitoring and use of LTSAE materials with families to improve the early identification of children with developmental delays