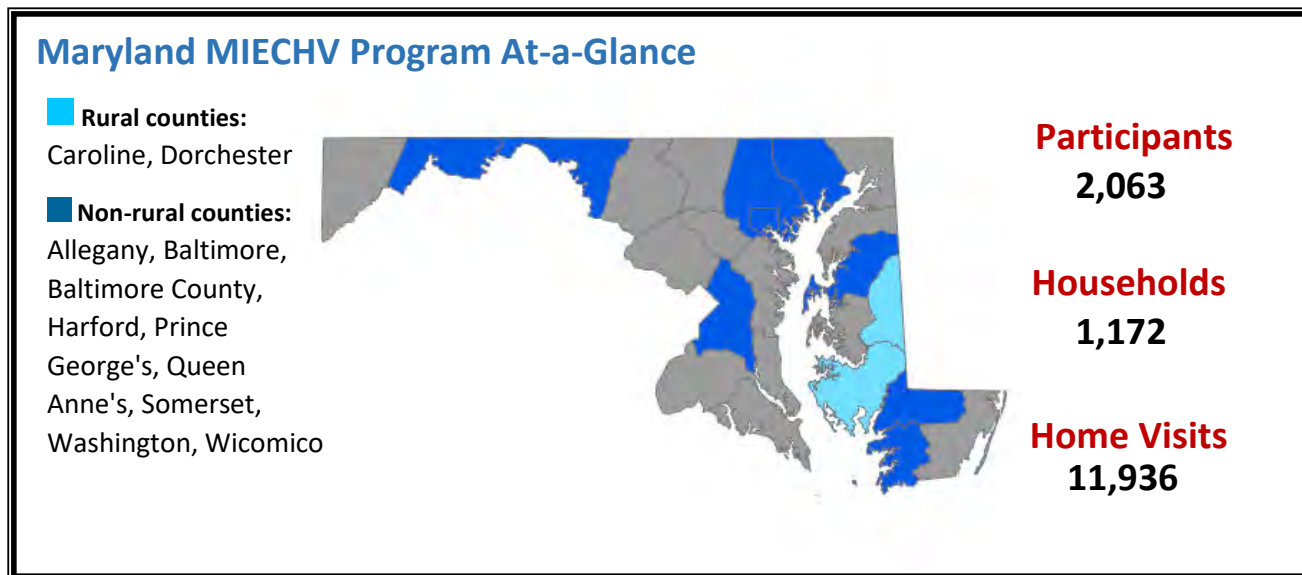


HRSA's Maternal, Infant, and Early Childhood Home Visiting (MIECHV) Program

- Supports the [Maryland Home Visiting Program](#) and provides voluntary, evidence-based home visiting programs for at-risk pregnant women and families with children through kindergarten entry
- Builds upon decades of scientific research showing that home visits by a nurse, social worker, early childhood educator, or other trained professional during pregnancy and in the first years of a child's life helps prevent child abuse and neglect, supports positive parenting, improves maternal and child health, and promotes child development and school readiness



Maryland Serves a High-Risk Population *

MIECHV Program awardees serve high-risk populations. Awardees tailor their programs to serve populations of need within their state.

- 52.5% of households were low income
- 18.2% of households included someone who used tobacco products in the home
- 16.3% of households included pregnant teens

Evidence-Based Home Visiting Models in Maryland

[Healthy Families America \(HFA\)](#)

[Nurse-Family Partnership \(NFP\)](#)

Maryland Performance Highlights*

- **Behavioral Concerns:** Caregivers were asked if they had any concerns regarding their child's development, behavior, or learning in 81.8% of postpartum home visits
- **Developmental Screening:** 76.1% of children enrolled in home visiting had a timely screen for developmental delays

*Due to a transition to a new data collection and reporting system, FY 2018 data were not available for these sections. Therefore, these data reflect the FY 2017 reporting period.