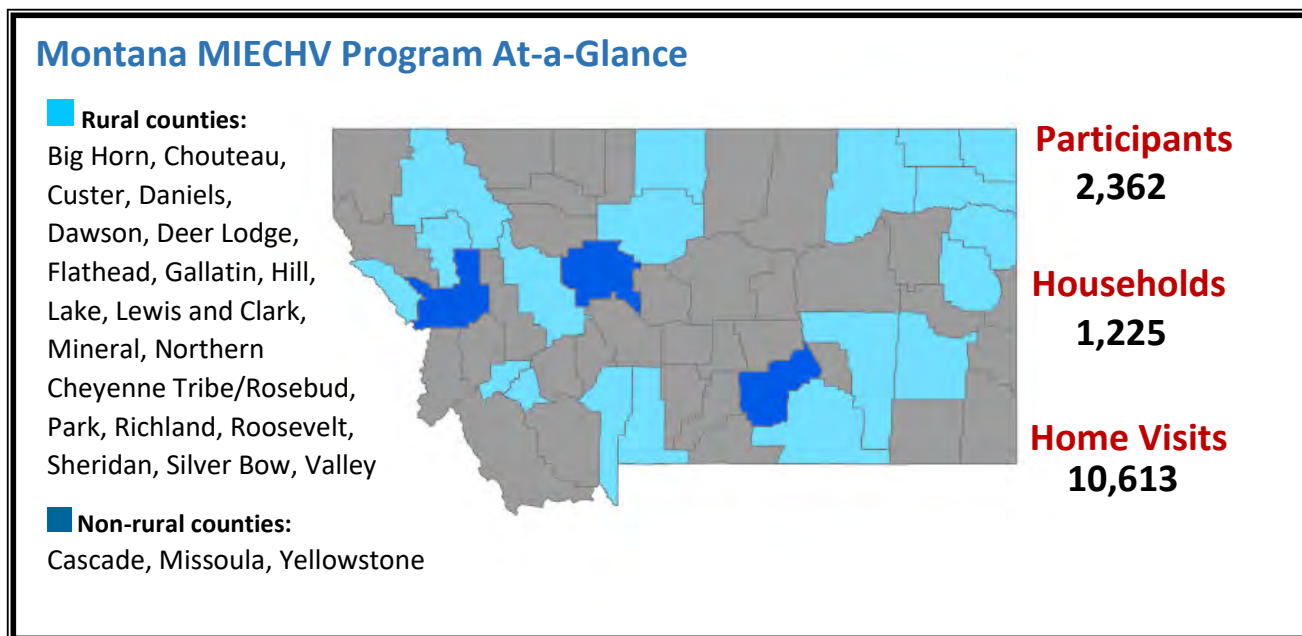


## HRSA's Maternal, Infant, and Early Childhood Home Visiting (MIECHV) Program

- Supports the [Montana Home Visiting Program](#) and provides voluntary, evidence-based home visiting programs for at-risk pregnant women and families with children through kindergarten entry
- Builds upon decades of scientific research showing that home visits by a nurse, social worker, early childhood educator, or other trained professional during pregnancy and in the first years of a child's life helps prevent child abuse and neglect, supports positive parenting, improves maternal and child health, and promotes child development and school readiness



## Montana Serves a High-Risk Population

MIECHV Program awardees serve high-risk populations. Awardees tailor their programs to serve populations of need within their state.

- 85.5% of households were low income
- 45.4% of households reported a history of child abuse or maltreatment
- 44.0% of households included someone who used tobacco products in the home

## Montana Performance Highlights

- **Behavioral Concern Inquiries:** Caregivers were asked if they had any concerns regarding their child's development, behavior, or learning in 97.1% of postpartum home visits
- **Well Child Visits:** 69.6% of children enrolled in home visiting received their last recommended well child visit based on the American Academy of Pediatrics schedule
- **First Years Initiative (FYI):** FYI partners MIECHV and Child Protection Agencies to provide voluntary home visiting to families identified in the child welfare system as at risk. FYI is available in 13 MIECHV local implementing agencies. In 2018, FYI received over 500 referrals and served 170 families

Evidence-Based Home Visiting Models in Montana

[Family Spirit](#)

[Nurse-Family Partnership \(NFP\)](#)

[Parents as Teachers \(PAT\)](#)

[SafeCare Augmented](#)