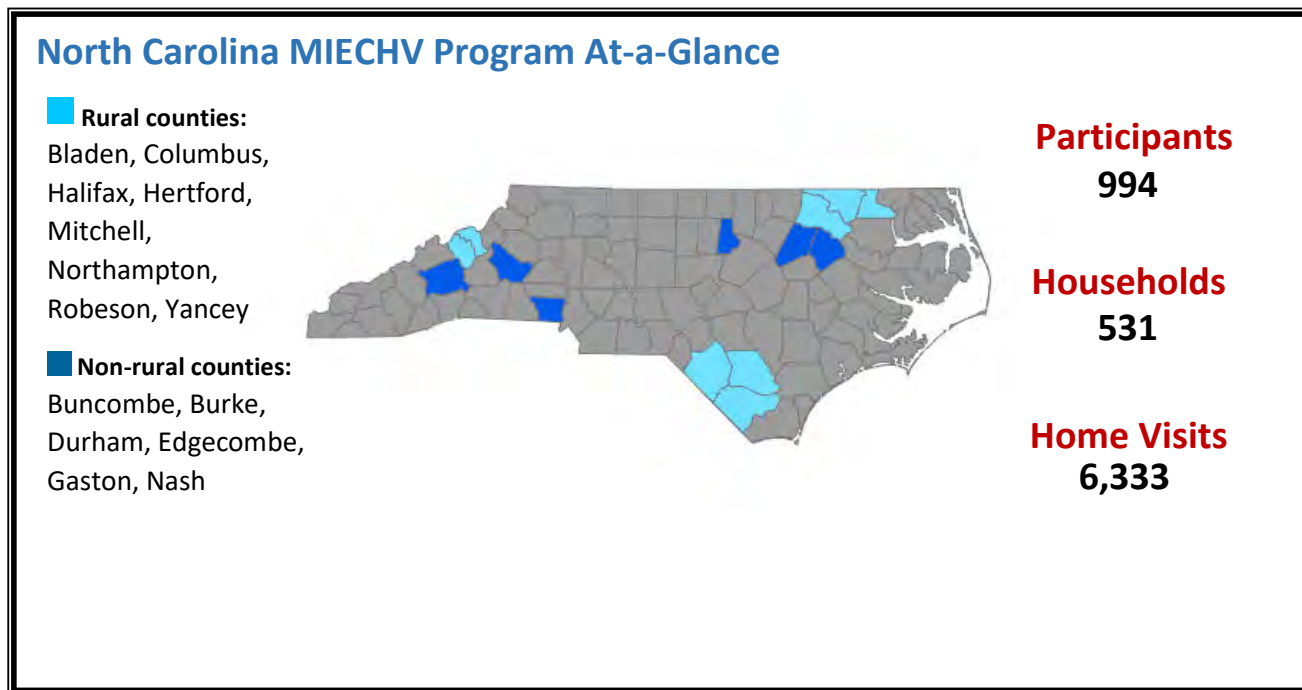


HRSA's Maternal, Infant, and Early Childhood Home Visiting (MIECHV) Program

- Supports the [North Carolina Home Visiting Program](#) and provides voluntary, evidence-based home visiting programs for at-risk pregnant women and families with children through kindergarten entry
- Builds upon decades of scientific research showing that home visits by a nurse, social worker, early childhood educator, or other trained professional during pregnancy and in the first years of a child's life helps prevent child abuse and neglect, supports positive parenting, improves maternal and child health, and promotes child development and school readiness



North Carolina Serves a High-Risk Population

MIECHV Program awardees serve high-risk populations. Awardees tailor their programs to serve populations of need within their state.

- 65.2% of households were low income
- 19.2% of households included pregnant teens
- 17.3% of households included someone who used tobacco products in the home

North Carolina Performance Highlights

- **Behavioral Concern Inquiries:** Caregivers were asked if they had any concerns regarding their child's development, behavior, or learning in 98.1% of postpartum home visits
- **Intimate Partner Violence (IPV) Screening:** 89.9% of caregivers enrolled in home visiting were screened for IPV within 6 months of enrollment

Evidence-Based Home Visiting Models in North Carolina

[Healthy Families America \(HFA\)](#)

[Nurse-Family Partnership \(NFP\)](#)