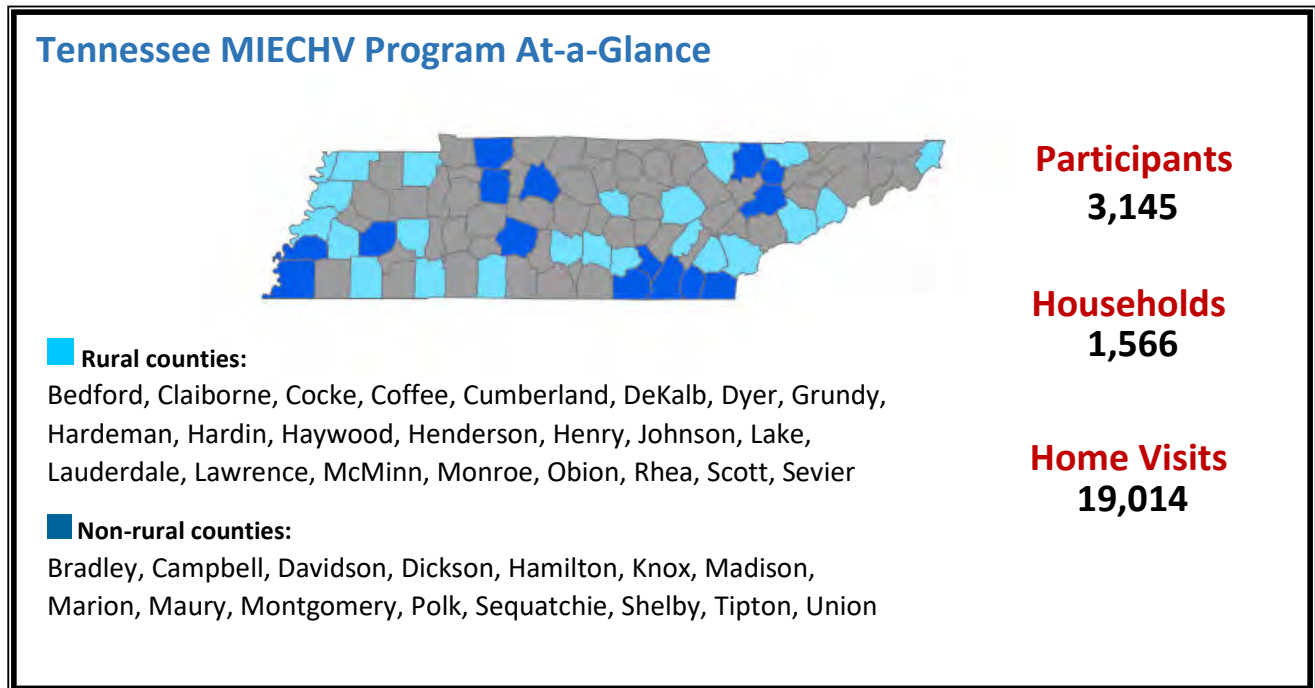


## HRSA's Maternal, Infant, and Early Childhood Home Visiting (MIECHV) Program

- Supports the [Tennessee Home Visiting Program](#) and provides voluntary, evidence-based home visiting programs for at-risk pregnant women and families with children through kindergarten entry
- Builds upon decades of scientific research showing that home visits by a nurse, social worker, early childhood educator, or other trained professional during pregnancy and in the first years of a child's life helps prevent child abuse and neglect, supports positive parenting, improves maternal and child health, and promotes child development and school readiness



## Tennessee Serves a High-Risk Population

MIECHV Program awardees serve high-risk populations. Awardees tailor their programs to serve populations of need within their state.

- 48.4% of households were low income
- 17.1% of households reported a history of child abuse or maltreatment
- 9.6% of households reported a history of substance abuse

## Tennessee Performance Highlights

- **Behavioral Concern Inquiries:** Primary caregivers were asked if they had any concerns regarding their child's development, behavior, or learning in 91.4% of postpartum home visits
- **Early Language and Literacy Activities:** 90.8% of children enrolled in home visiting had a family member who read, told stories, and/or sang with them on a daily basis

Evidence-Based Home Visiting Models in Tennessee

[Healthy Families America \(HFA\)](#)

[Nurse-Family Partnership \(NFP\)](#)

[Parents as Teachers \(PAT\)](#)