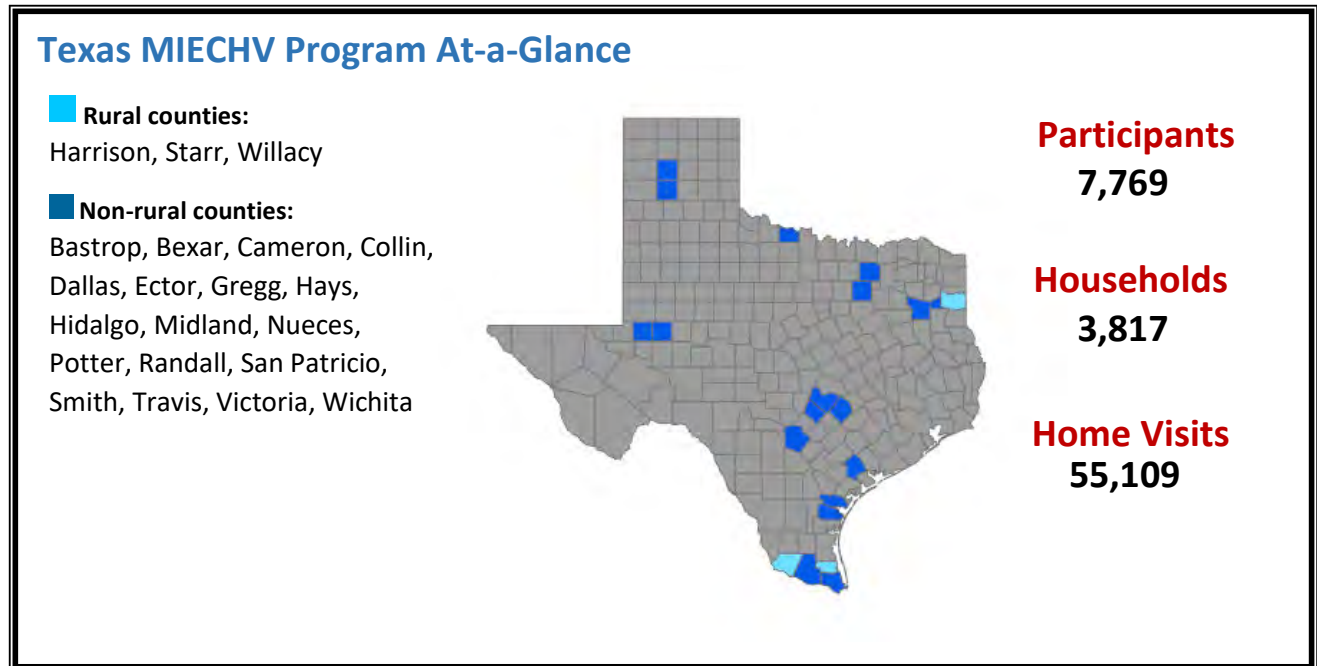


## HRSA's Maternal, Infant, and Early Childhood Home Visiting (MIECHV) Program

- Supports the [Texas Home Visiting Program](#) and provides voluntary, evidence-based home visiting programs for at-risk pregnant women and families with children through kindergarten entry
- Builds upon decades of scientific research showing that home visits by a nurse, social worker, early childhood educator, or other trained professional during pregnancy and in the first years of a child's life helps prevent child abuse and neglect, supports positive parenting, improves maternal and child health, and promotes child development and school readiness



## Texas Serves a High-Risk Population

MIECHV Program awardees serve high-risk populations. Awardees tailor their programs to serve populations of need within their state.

- 58.7% of households were low income
- 21.1% of households included someone with low student achievement
- 7.4% of households included pregnant teens

## Texas Performance Highlights

- **Intimate Partner Violence (IPV) Screening:** 93.6% of caregivers enrolled in home visiting were screened for IPV within 6 months of enrollment
- **Child Maltreatment:** Only 0.8% of children enrolled in home visiting had an investigated case of child maltreatment

### Evidence-Based Home Visiting Models in Texas

[Healthy Families America \(HFA\)](#)

[Home Instruction for Parents of Preschool Youngsters \(HIPPY\)](#)

[Nurse-Family Partnership \(NFP\)](#)

[Parents as Teachers \(PAT\)](#)