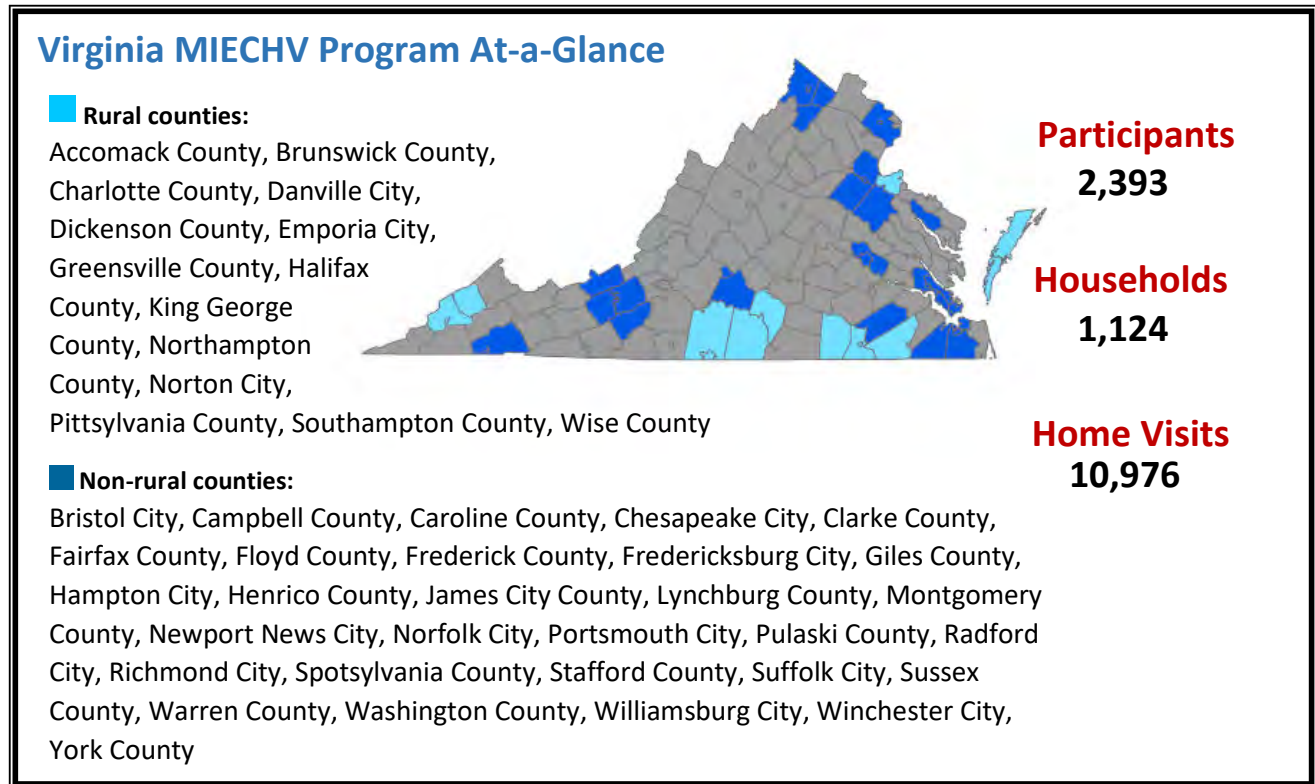


HRSA's Maternal, Infant, and Early Childhood Home Visiting (MIECHV) Program

- Supports the [Virginia Home Visiting Program](#) and provides voluntary, evidence-based home visiting programs for at-risk pregnant women and families with children through kindergarten entry
- Builds upon decades of scientific research showing that home visits by a nurse, social worker, early childhood educator, or other trained professional during pregnancy and in the first years of a child's life helps prevent child abuse and neglect, supports positive parenting, improves maternal and child health, and promotes child development and school readiness



Virginia Serves a High-Risk Population

MIECHV Program awardees serve high-risk populations. Awardees tailor their programs to serve populations of need within their state.

- 89.6% of households were low income
- 21.0% of households reported a history of child abuse or maltreatment
- 16.4% of households reported a history of substance abuse

Evidence-Based Home Visiting Models in Virginia

[Healthy Families America \(HFA\)](#)

[Nurse-Family Partnership \(NFP\)](#)

[Parents as Teachers \(PAT\)](#)

Virginia Performance Highlights

- **Depression Screening:** 91.9% of caregivers enrolled in home visiting were screened for depression within 3 months of enrollment or within 3 months of delivery
- **Well Child Visits:** 91.0% of children enrolled in home visiting received their last recommended well child visit based on the American Academy of Pediatrics schedule